



Cedar Valley Water

# Our Mission

Central Iron County Water Conservancy District





**Spencer J. Cox**  
**Governor**

**EXECUTIVE ORDER**  
**2021-7**

*Declaring a State of Emergency Due to Drought Conditions*

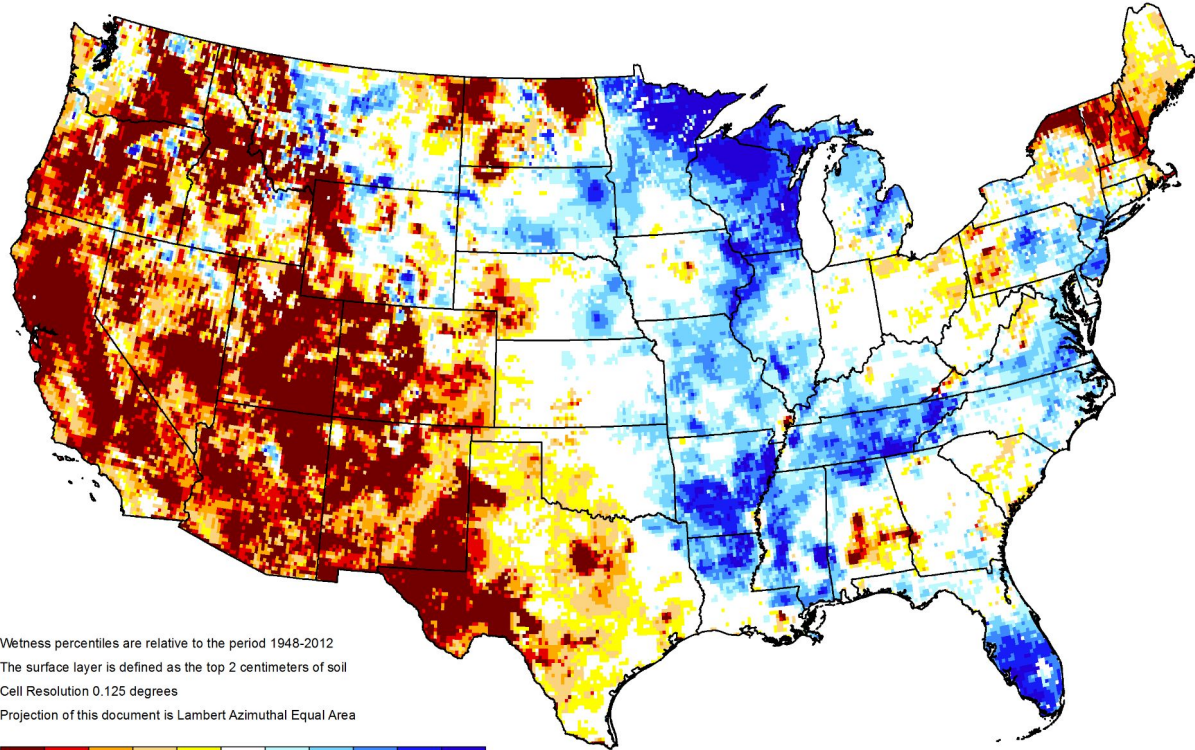
WHEREAS, the state of Utah experienced a record dry and near record hot calendar year in 2020;

WHEREAS, the statewide current snowpack is approximately 70% of normal April peak;



## GRACE-Based Surface Soil Moisture Drought Indicator

April 12, 2021



Wetness percentiles are relative to the period 1948-2012

The surface layer is defined as the top 2 centimeters of soil

Cell Resolution 0.125 degrees

Projection of this document is Lambert Azimuthal Equal Area

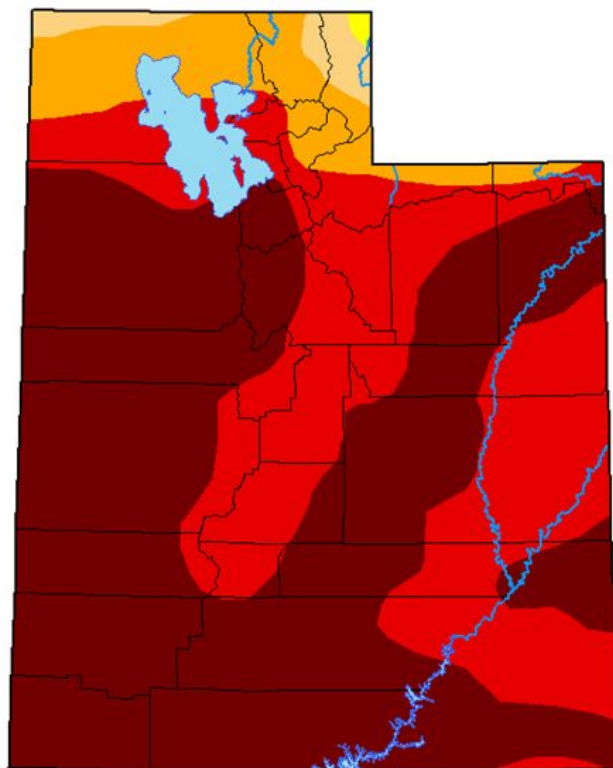


Wetness Percentile

<https://nasagrace.unl.edu>



# U.S. Drought Monitor Utah



**April 13, 2021**

*(Released Thursday, Apr. 15, 2021)*

Valid 8 a.m. EDT

*Drought Conditions (Percent Area)*

	None	D0-D4	D1-D4	D2-D4	D3-D4	D4
<b>Current</b>	0.00	100.00	99.84	98.13	90.20	57.20
<b>Last Week</b> <i>04-06-2021</i>	0.00	100.00	99.82	97.04	90.20	57.20
<b>3 Months Ago</b> <i>01-12-2021</i>	0.00	100.00	100.00	97.37	90.11	68.56
<b>Start of Calendar Year</b> <i>12-29-2020</i>	0.00	100.00	100.00	97.38	90.11	68.56
<b>Start of Water Year</b> <i>09-29-2020</i>	0.00	100.00	99.62	93.20	87.26	12.80
<b>One Year Ago</b> <i>04-14-2020</i>	22.15	77.85	46.54	2.19	0.00	0.00

## Intensity:

None	D2 Severe Drought
D0 Abnormally Dry	D3 Extreme Drought
D1 Moderate Drought	D4 Exceptional Drought

*The Drought Monitor focuses on broad-scale conditions. Local conditions may vary. For more information on the Drought Monitor, go to <https://droughtmonitor.unl.edu/About.aspx>*

## Author:

Deborah Bathke  
National Drought Mitigation Center

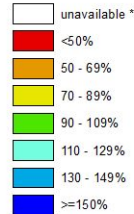


[droughtmonitor.unl.edu](https://droughtmonitor.unl.edu)

# Utah SNOTEL Current Snow Water Equivalent (SWE) % of Normal

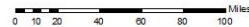
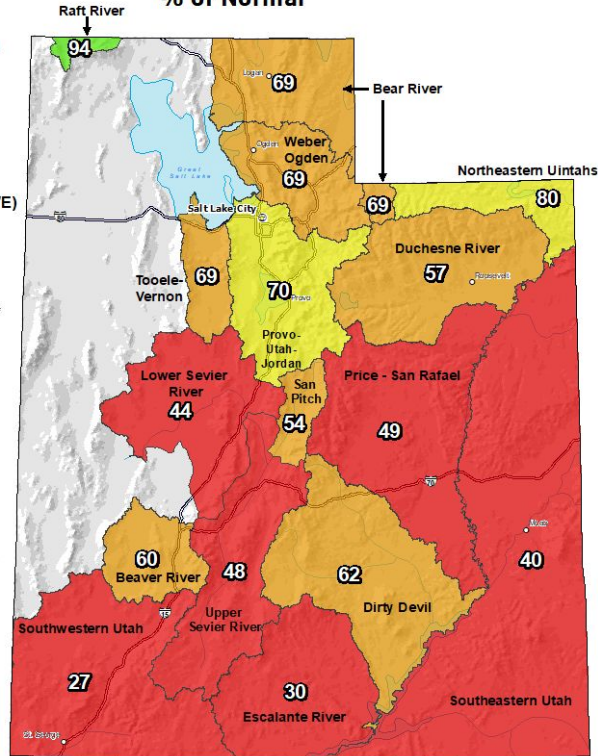
Apr 16, 2021

Snow Water  
Equivalent (SWE)  
Basin-wide  
Percent of  
1981-2010  
Median



\* Data unavailable at time  
of posting or measurement  
is not representative at this  
time of year

Provisional Data  
Subject to Revision



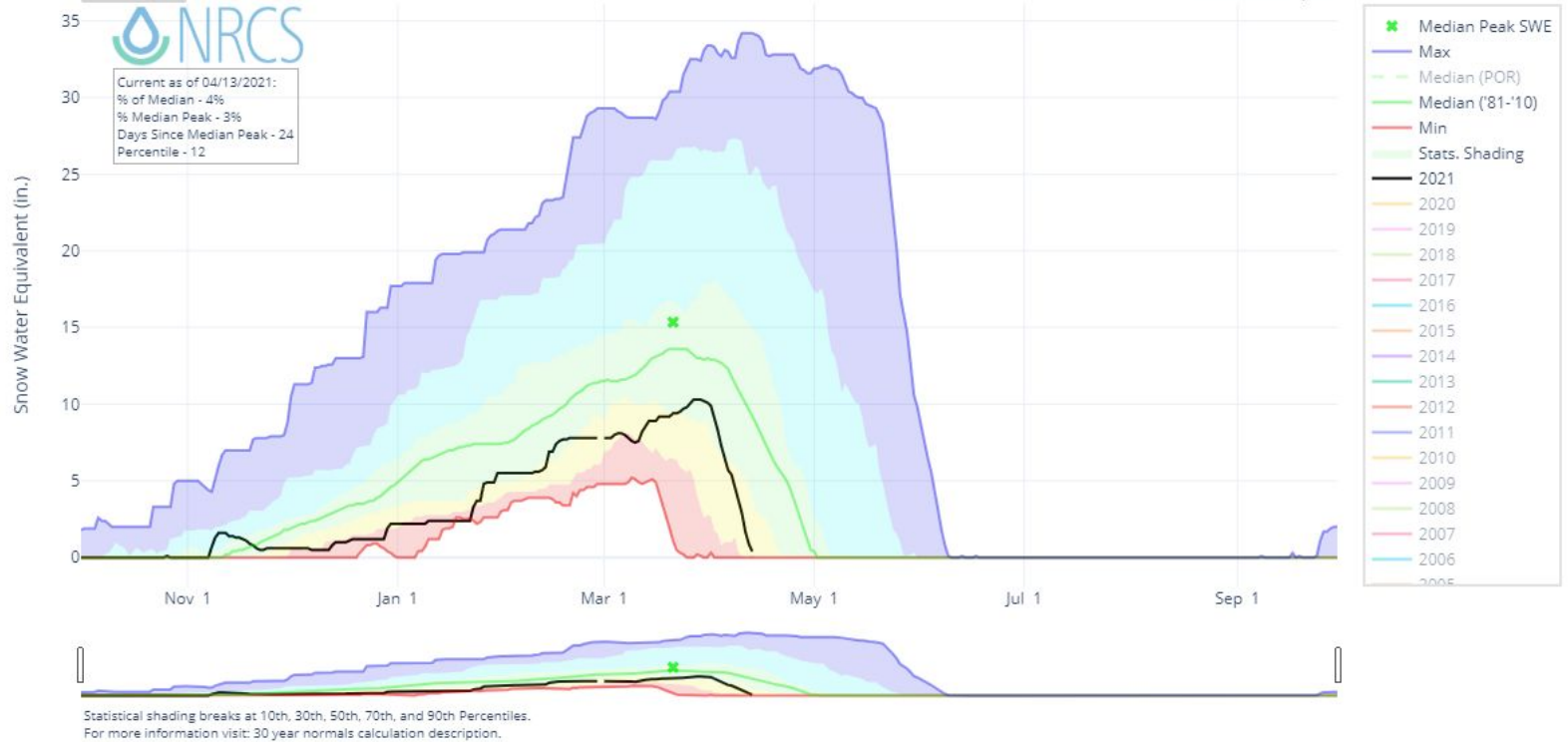
The snow water equivalent percent of normal represents the current  
snow water equivalent found at selected SNOTEL sites in or near the basin  
compared to the average value for those sites on this day. Data based on  
the first reading of the day (typically 00:00).

Prepared by:  
USDA/NRCS National Water and Climate Center  
Portland, Oregon  
<http://www.wcc.nrcs.usda.gov>

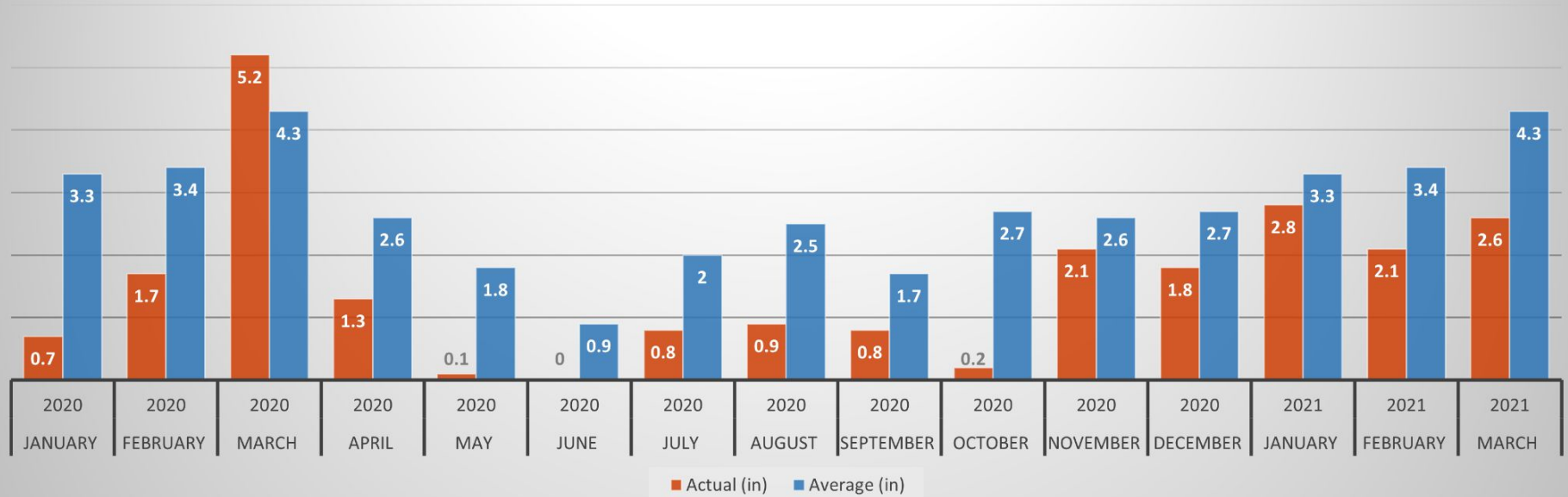
# SNOW WATER EQUIVALENT AT WEBSTER FLAT

Reset Range

Link to data: CSV / JSON

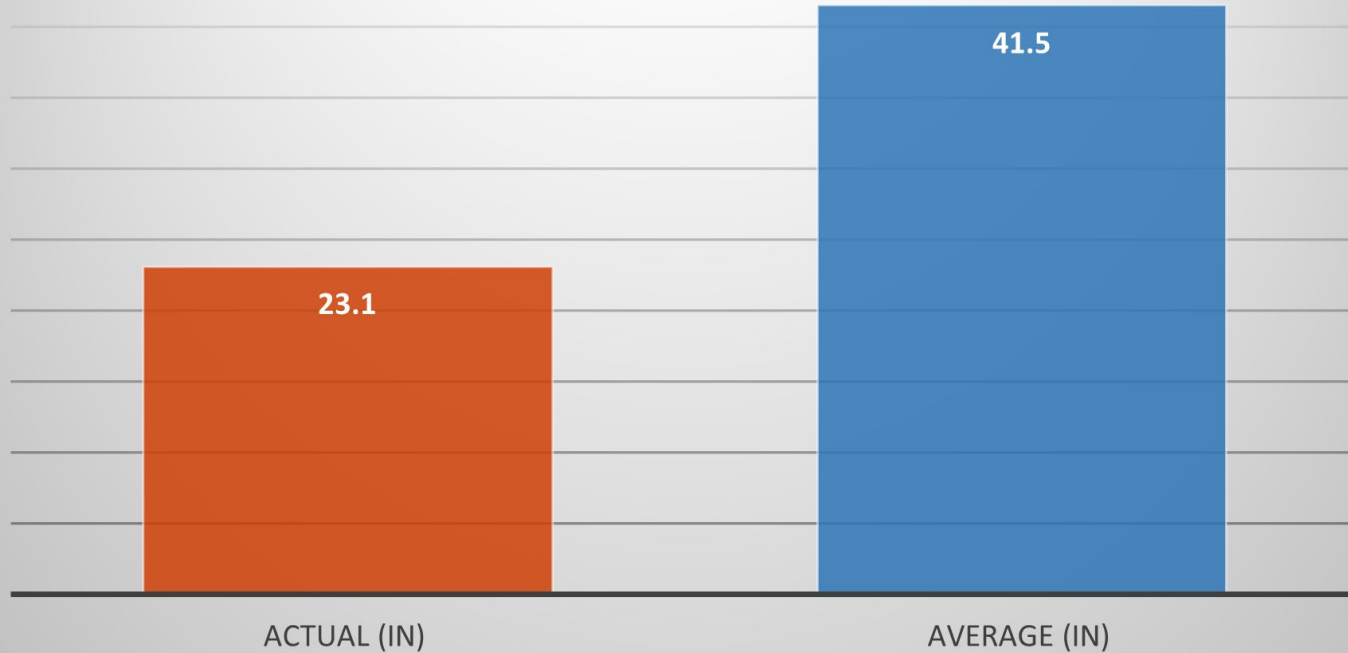


## Precipitation Rates January 2020-March 2021



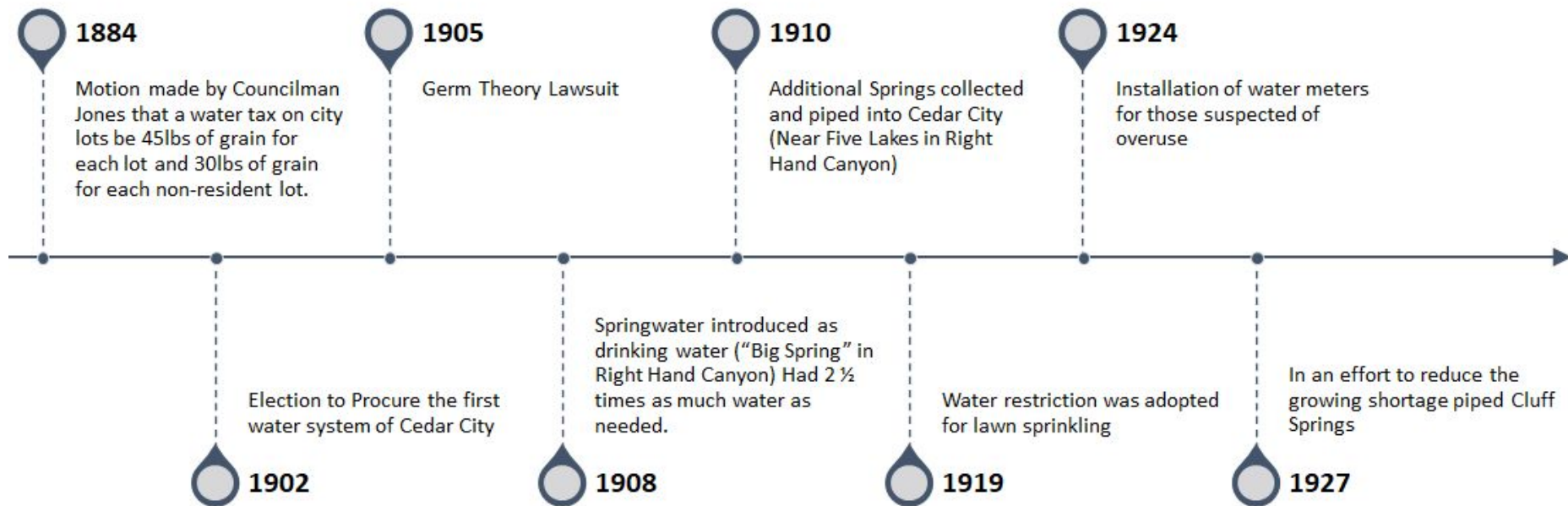


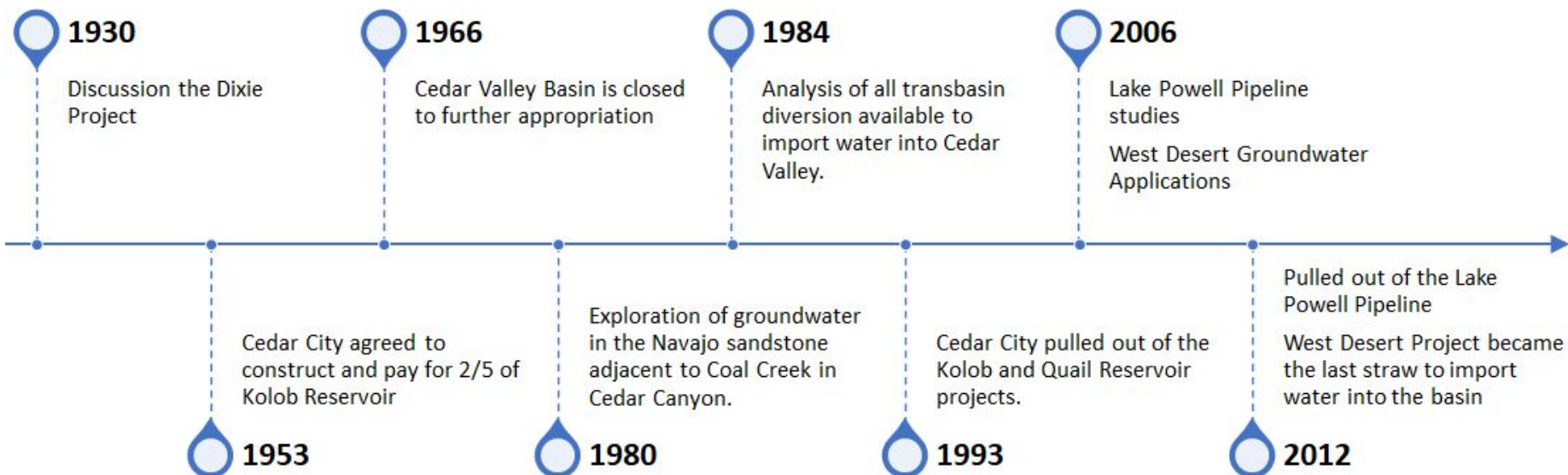
## Total Precipitation: January 2020-March 2021



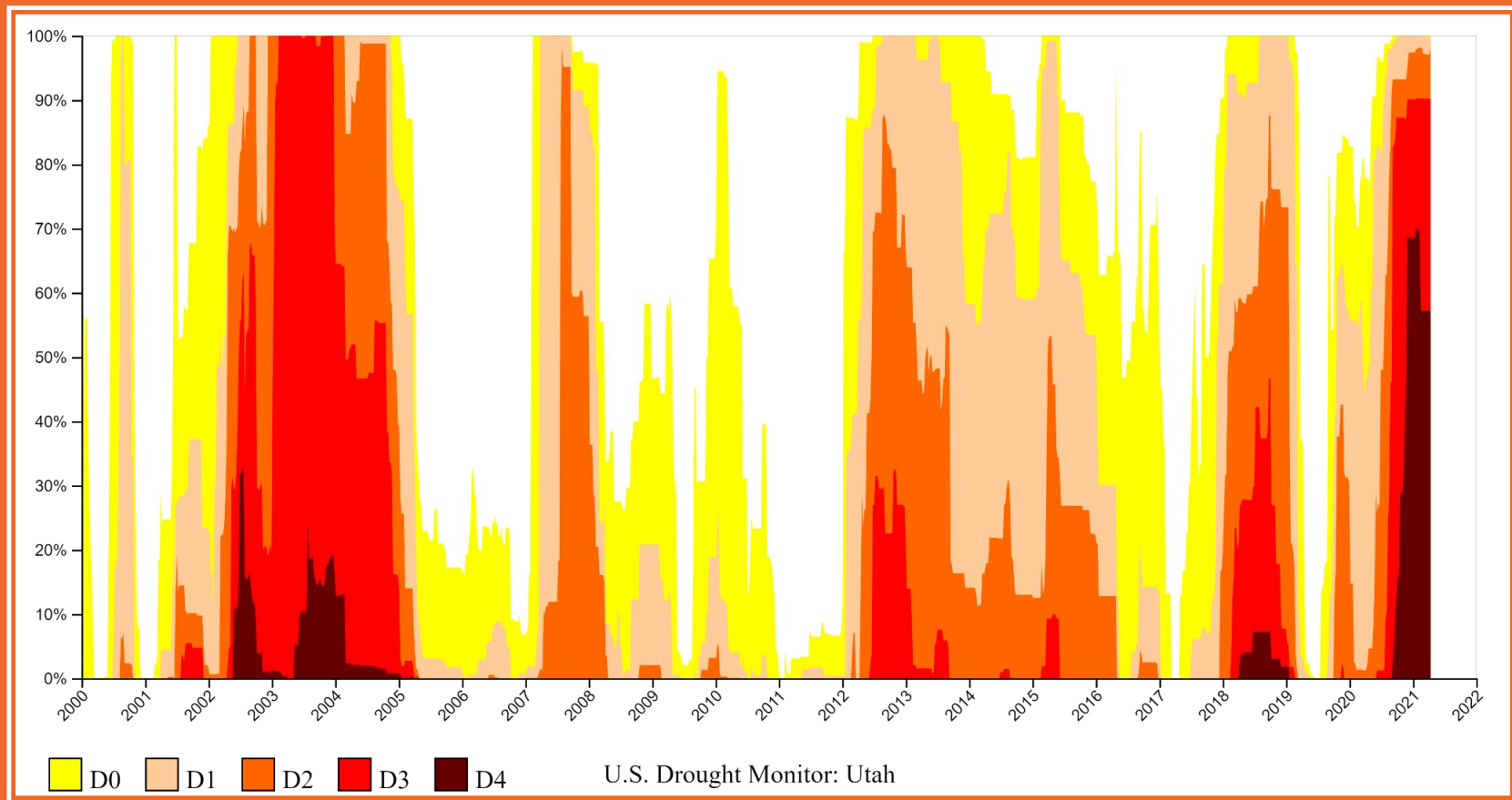


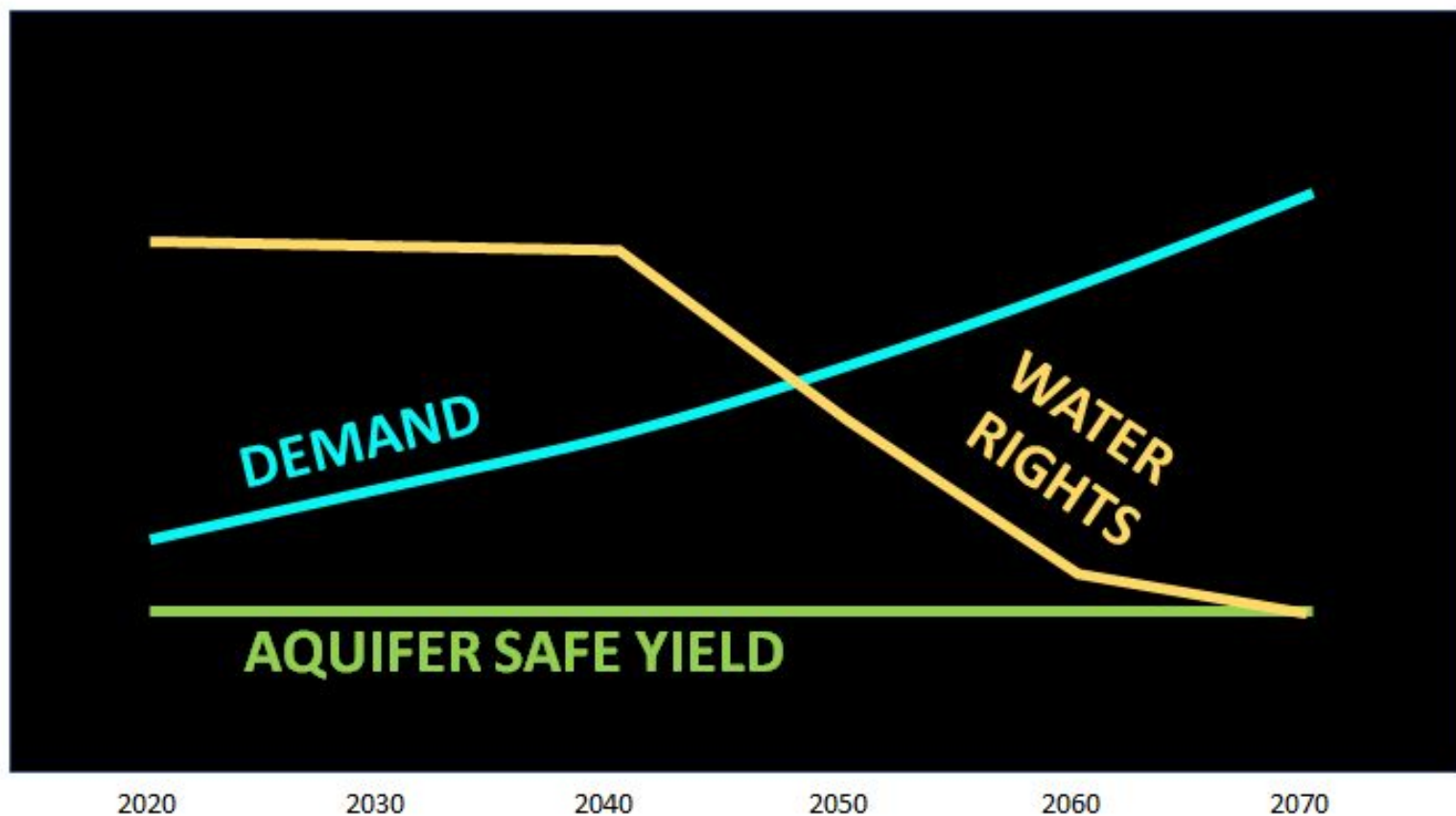














# We work with Experts in the region to implement solutions

Utah Geological Survey

United State Geological Survey

E&I Conservation District

Utah State & Southern Utah Universities

Utah Division of Water Rights

Natural Resource Conservation Service







# Agricultural Conservation

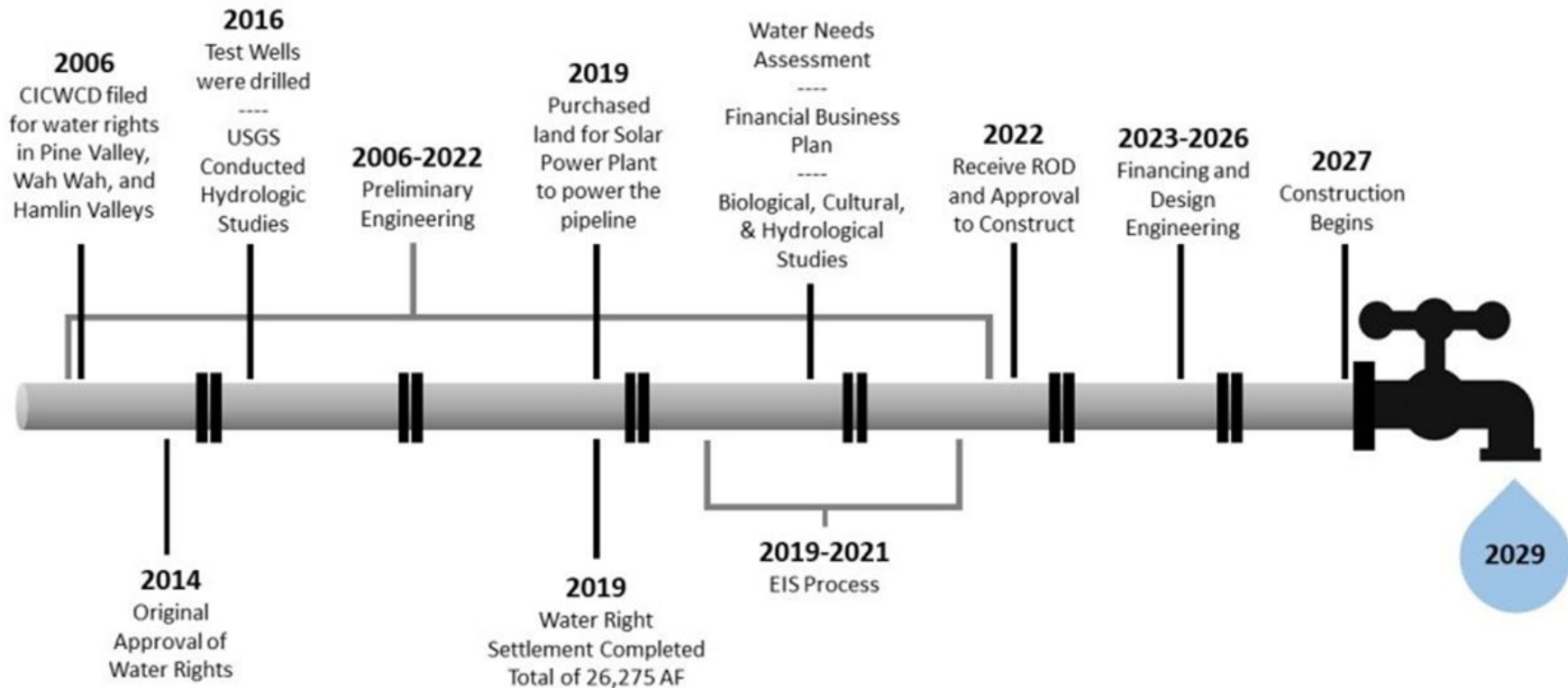
By working with the E&I Conservation District and the Utah Legislature, the District helped convert over 2,000 acres of center pivots to LEPA/LESA Systems.

**95%** Efficiency compared to 75%  
efficiency of typical systems

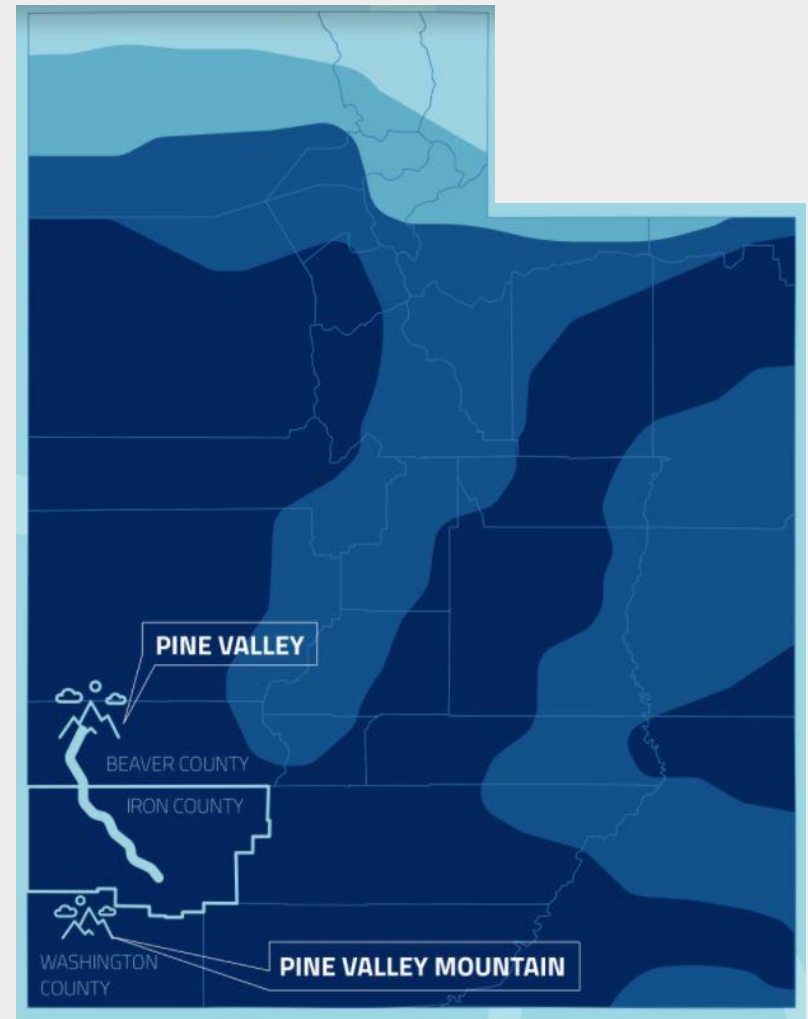
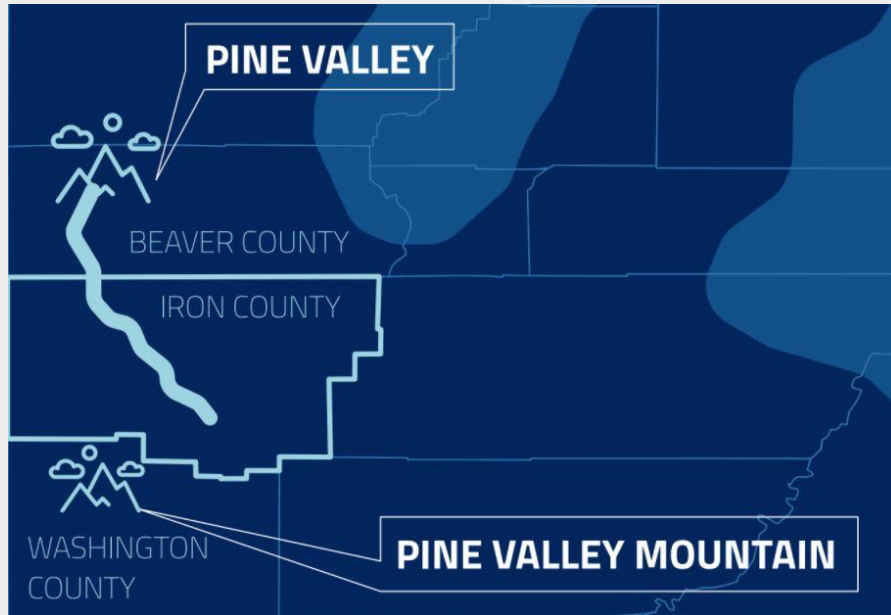


# Pine Valley Water Supply and Conservation Project

## Anticipated Project Timeline



# Pine Valley Water Supply Project



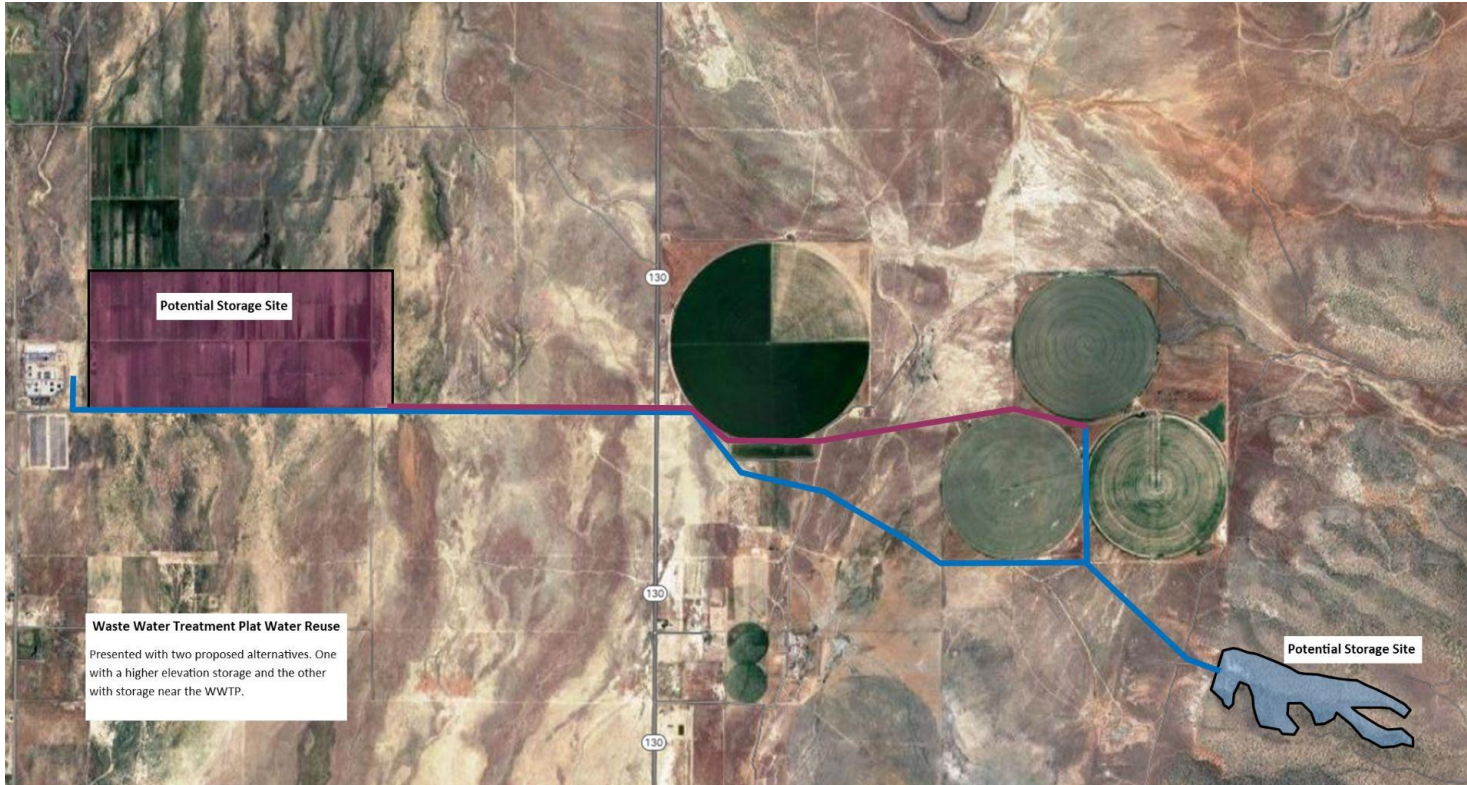


## Cost of Importing:

	Water Amount	Cost (present value)	Price per AF
<b>Kolob</b>	6,500 AF	\$105,800,000	\$16,277
<b>LLP (to Cedar Valley)</b>	13,000 AF	\$515,502,582	\$39,654
<b>PVWS</b>	15,000 AF	\$260,000,000	\$17,333



# Wastewater Reuse





## Water Advisory Committee Recommendations:

Create a public information campaign with simple points

Correlate with elected officials and cities

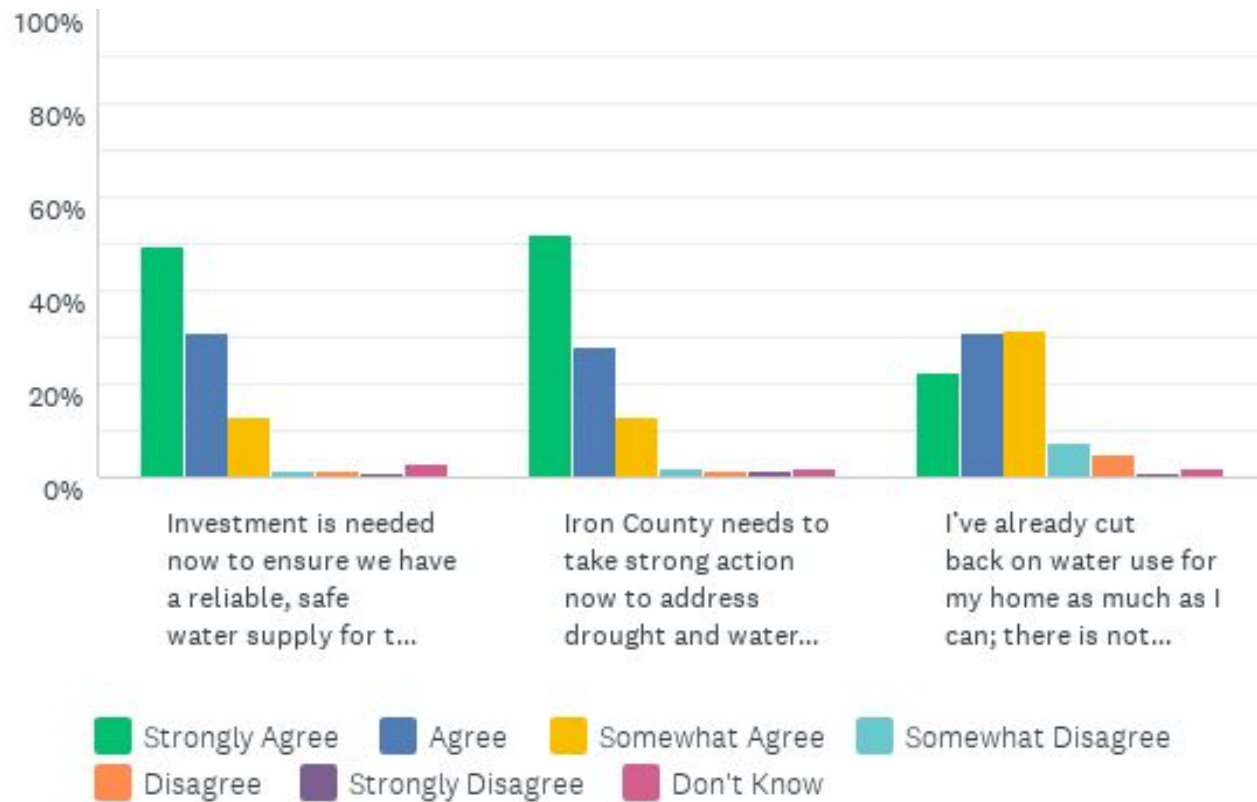
Correlate with the private sector

Increasing public education on through multiple  
media outlets

Educate the public on the State's Groundwater  
Management Plan



## 2021 Community Survey Results:



5th Grade  
Water Fair and  
Southern Utah  
Public  
Information  
Campaign

EVERY  
DROP  
COUNTS

3 THINGS  
**YOU**  
CAN DO







3 THINGS YOU  
CAN DO

GET TO KNOW YOUR  
H<sub>2</sub>O  
GET TO KNOW YOUR

IN A  
DROUGHT,  
EVERY DROP  
COUNTS



CENTRAL IRON COUNTY  
**WATER CONSERVANCY**  
DISTRICT



**Wait to  
Irrigate**

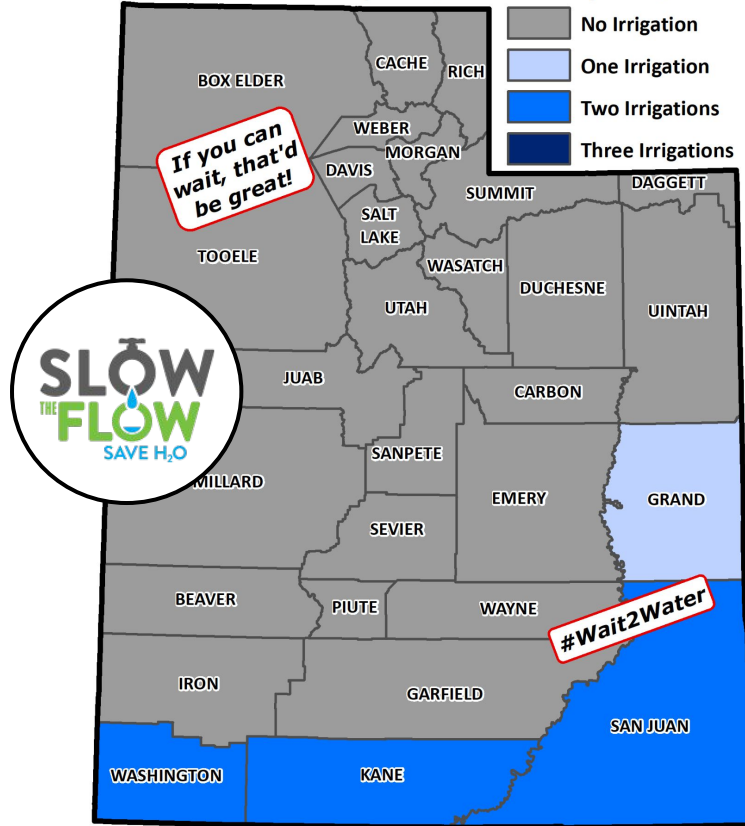


**Shorten Your  
Showers**



**Fix a Leak**

For the week of: Apr 16, 2021 to Apr 22, 2021



One Irrigation is equivalent to 20 minutes with pop-up spray heads and 40 minutes with impact rotor sprinklers



Utah  
Water  
Savers





# Ways can you help

Have conversations about drought & campaign

Know your fact sheet

Share social media posts

Share videos

Display posters

Invite the District to present to your group(s)





# Information Kits

**Digital:** social media assets, videos, photos, maps

**Physical:** posters, stickers, passalong cards

**Cobranding:** add your logo to campaign digital assets to show your support

